

Lattice Basket Base

(Cut 2)

Instructions:

Cut and score two pieces of 8.5" x 11" cardstock. Assembly by glueing side tab on one piece to straight side on next piece. Fold in bottom tabs and glue. Add handle of your choice and length, glue in place.

Supplies Needed:

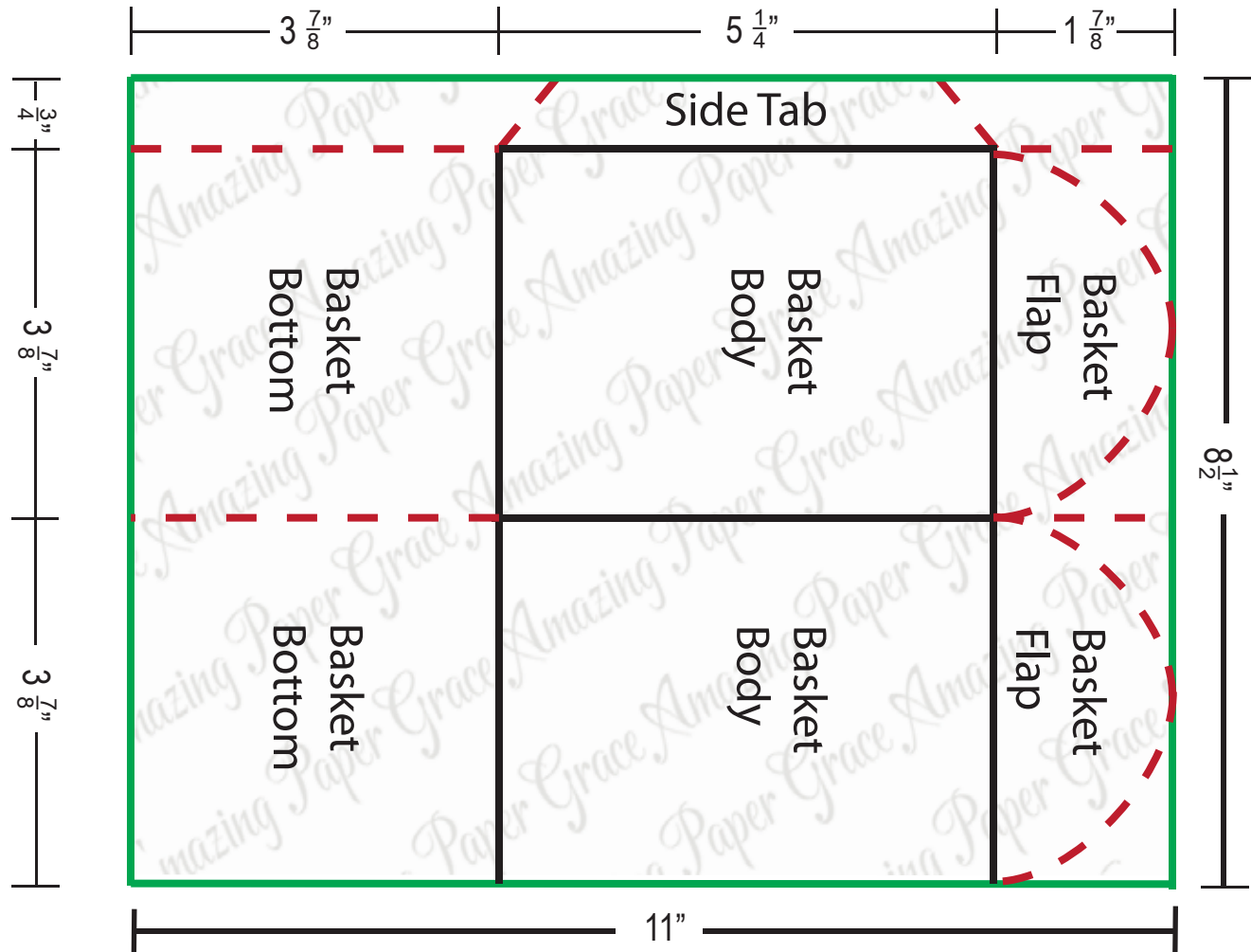
8.5" x 11" Cardstock (2)
Scissors
Adhesive
Scoring Tool
Ruler

Drawing is not to scale, create using your score tool and dimensions shown on diagram. Tip: Draw precise rounded flaps using Spellbinders Standard Circles as a template, then cut. A visual of this basket template can be found at www.amazingpapergrace.com

Score Lines 

Cut Lines 

Perimeter 



©AmazingPaperGrace.com

You are welcome to download this for your personal use but ask that the form not be uploaded anywhere else. Feel free to pass on the link to the form.